

Installation Instructions for the SP Mobile remote option for ServicePoint SQL

The following pages of instructions should allow you to successfully install the SP Mobile software. If you need assistance, please contact us via email using support@rtmcs.com, or call toll free at 866-879-3867.

If you are installing for the first time:

The initial install/setup requires two things: 1. A web server on which to host the apsx files, and 2. Set up of the web.config file to allow access to the correct ServicePoint database.

We recommend hosting the app in-house. The #1 reason for this is security. If the app is hosted on the customer network, the firewall only needs to allow html access to the internal network, routing the request to the proper address. To set up the inside server requires IIS to be set up on a computer on the network, and the downloaded file unzipped into the default directory for the web server (usually Inetpub\wwwroot). Routing html access to this computer should result in a browser opening the Default.aspx page.

The web.config file contains the information needed by the app to access the CounterPoint/PBS/GP and ServicePoint data. As delivered, the SP Mobile installation contains a file called starter.web.config. **The starter.web.config file must be copied to create a file called web.config.** After modifying the values referenced below, this web.config file must be located in the default web server directory. The section that needs to be addressed and modified to fit the user's configuration is contained within the "appsettings" tags. The following lines contain some default settings as they may exist in the attached file.

```
<appSettings>
  <add key="DBServer" value="VIRTUAL-55351\SQLEXPRESS2008" />
  <add key="DBOwner" value="dbo" />
  <add key="DBName" value="DEMOCOMP" />
  <add key="DBName2" value="" />
  <add key="DBName3" value="" />
  <add key="DBName4" value="" />
  <add key="DBName5" value="" />
  <add key="DBUserName" value="sa" />
  <add key="DBUserPassword" value="CounterPoint8" />
  <add key="SessionTimeoutWarning" value="3" />
  <add key="SessionTimeout" value="3.5" />
  <add key="Platform" value="CP" />
  <add key="BannerImage" value="TopBannerImage.jpg"/>
</appSettings>
```

The values in these keys should be adjusted to suit the client network. Descriptions are as follows:

- *DBServer* – This is the SQL Server instance, that is used to access the accounting and ServicePoint SQL databases
- *DBOwner* – Owner of the accounting and ServicePoint databases. Usually “dbo”.
- *DBName* – Name of the accounting database for the primary company. For example, “DEMOCOMP”
- *DBName2-5* – Names of the accounting databases for additional companies that technicians should be able to access.
- *DBUserName* – SQL server user name to be used to log into the database
- *DBUserPassword* – Password for the SQL server user. Access to the web.config file is protected by IIS so that this information cannot be accessed by outside html calls.
- *SessionTimeoutWarning* – This is a value, in minutes, before a popup warning will be given of an impending forced logout due to inactivity. If this value is not set, or set to zero, a default of "4" will be used. A maximum value of "9" can be set.
- *SessionTimeout* – This is a value, in minutes, before a forced logout due to inactivity is done. If this value is not set, or set to zero, a default of "5" will be used. A maximum value of "10" can be set.
- *Platform* – This allows us to call the correct tables/columns for different accounting platforms. Values are “CP” for CounterPoint, “PBS” for Passport, and “GP” for Great Plains Dynamics.
- *BannerImage* – Allows a customized company logo/image to be displayed at the top of the remote app pages. The name of the image file should be entered into the Value, including the file extension (.jpg, .bmp, etc). Tip: using a name other than “TopBannerImage.jpg” will keep our periodic updates to the app from overwriting the local image file. ***If no image is desired, setting the value to "none" will remove the image from all pages.***

**** Special note regarding SMTP settings ****

Some settings require enhanced permissions to be set (for example, overriding the default smtp port). If a permissions error is received when attempting to send an email via the web app, it is likely that extended permissions must be granted. Generally a “trust level” of Medium is sufficient to run the SP Mobile app. If enhanced permissions are needed for email, the trust level must be set to Full. The full trust level must be allowed by the IIS server and can be set specifically in the app’s web.config by finding the line below and changing to trust level = “Full”.

```
<trust level="Medium" originUrl=""/>
```

If you are only installing an update to the web app:

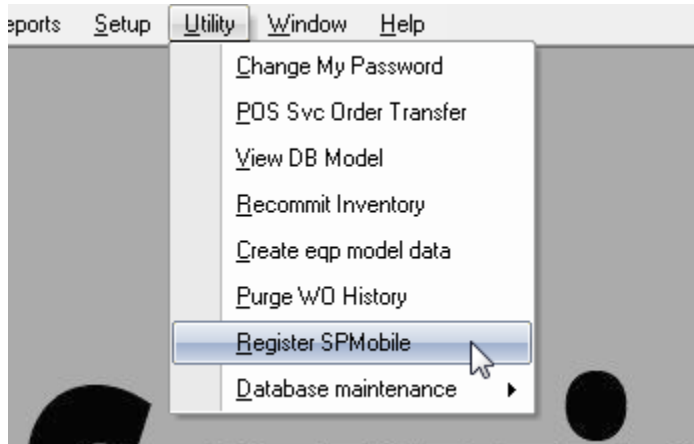
Unzip the downloaded file into the default web site directory for the existing web server. Files with the same name that are already present in the directory should be overwritten. Please review the web.config entries in the section above for any new functionality/configuration that may be available in the updated version. It may be helpful to review the release notes to locate the new features.

Registration and configuration options after installation

Registration of the SP Mobile app is done through the ServicePoint desktop software. It requires the use of ServicePoint version 9.3 build 206 or later. If registration is not performed, the system will function as demonstration software. The latest service pack for ServicePoint can always be downloaded and installed using the following link.

<http://www.rtmcs.com/downloads.htm#ServicePointSP>

To start the registration process, invoke the desktop version of ServicePoint, logging into the company for which you will be running SP Mobile. To install the registration string, invoke the function under “*Utility / Register SPMobile*”.



The resulting window will allow the entry of the registration string, which you will receive from us via email. To install the code, please copy the supplied string from the registration email by highlighting and pressing Ctrl-C. Then, paste the string into the text entry box in the Register SPMobile window by placing the cursor in the box then pressing Ctrl-V. You should see the registration information in the text box. Click the “Register” button to install the string.

You can customize some functionality of the implementation through the following items.

- The banner graphic at the top of each page in the web app may be customized by customizing the AppSettings key “BannerImage” in the web.config file (described above). It is recommended to use a file name other than “TopBannerImage.jpg” for your own jpg image/logo file to avoid being overwritten by our updates to the system.
- To validate users for remote login, the login ID must simply match a Tech ID from within ServicePoint. To make a Tech a valid web user, check the box under Setup/Service Techs as shown below. You may also designate whether a technician can interact with work orders that have been assigned to others.

Service Techs

Tech ID: Inactive

Name:

Technician
 Helper

Phone 1:

Phone 2:

Email address:

Hourly costs

Regular:

Overtime:

Special:

Skills/Categories

🔍

🔍

🔍

🔍

Dflt Parts location: 🔍

Department:

Zone:

Work calendar: 🔍

Daily schedule limit:
 Tasks
 Hours
 Allow override? (warn only)

Mobile web user
 Mobile login password:

See other techs' work orders in SP Remote?